

晶铭机械

JING MING JI XIE



高应力高硼硅防火玻璃钢化炉

JingMGlass

防火系列

秦皇岛市晶铭玻璃机械制造有限公司

Qinhuangdao jingming glass machinery manufacturing co. LTD

地址：秦皇岛市经济技术开发区龙海道35号

联系电话：0335-7129380

手机：13833537818

网址：http://www.qhdjingming.com

E-mail：83384335@qq.com



公司网站



产品咨询

版权归属秦皇岛市晶铭玻璃机械制造有限公司所有，此手册内所列数据，会因技术变动而有所调整，恕不另行通知。

高应力高硼硅防火玻璃钢化炉

JingMGlass

防火系列



秦皇岛市晶铭玻璃机械制造有限公司

PUBLICITY
信息公示

公司简介 COMPANY PROFILE

秦皇岛市晶铭玻璃机械制造有限公司位于有“中国玻璃工业的摇篮”之称的海滨城市——秦皇岛。晶铭机械是一家专业从事玻璃钢化设备的研发、设计、制造和销售为一体的企业，秉承“精品质、高效率、重节能”的经营理念，为国内外客户提供优质的生产设备和完善的售后服务。

晶铭机械顺应时代变换，在发展中求生存，不断进取，不断创新，以精湛的生产技术和客户至上的服务理念，为客户提供创新且全面的解决方案，使其多年来赢得所有合作伙伴的一致好评。

不断发展的晶铭机械致力于通过数字化、智能化、数据互联的玻璃深加工系统化解决方案，以及性能卓越的平板玻璃加工领域创新型单机整体解决方案。为建筑、太阳能、家电、家具、汽车玻璃等行业的一站式合作伙伴，提供专业的整套设备解决方案。

Qinhuangdao Jingming Glass Machinery Manufacturing Co., Ltd. is located in the coastal city of Qinhuangdao, known as the “Cradle of China's glass industry.”. Jingming machinery is a professional glass equipment research and development, design, manufacturing and sales of enterprises, adhering to the “High quality, high efficiency, energy-saving” business philosophy, for domestic and foreign customers to provide high-quality production equipment and perfect after-sales service. Jingming machinery adapts to the change of the times, strives for survival in the development, unceasingly enterprising, unceasing innovation, with superb production technology and customer-oriented service concept, to provide customers with innovative and comprehensive solutions, it has won praise from all partners over the years. The continuous development of Jingming machinery is committed to the deep processing of glass through digital, intelligent, data-connected system solutions, and excellent performance of flat glass processing field of innovative stand-alone overall solution. For the construction, solar energy, home appliances, furniture, automotive glass industry, one-stop partners, to provide professional equipment solutions.

高效·节能

- 1、完美的风栅结构让钢化工艺的真谛得以全面诠释。
- 2、全面实现风机扁平跟随控制，把风机的功率配比及合理运用近乎完美。
- 3、独树一帜的保温概念让保温材料充分的体现其真正的性能特性。
- 4、全新的低辐射玻璃加热系统正在引领节能新概念，为低辐射LOW-E玻璃的广泛应用奠定基础。

Environmental protection and energy saving

- 1, the perfect wind grid structure allows the true meaning of the tempering process to be fully interpreted.
- 2, fully realize fan flat follow control, the fan power ratio and reasonable use of almost perfect.
3. The unique concept of insulation allows the insulation material to fully reflect its real performance characteristics.
4. The brand-new low-radiation glass heating system is introducing a new concept of energy saving, laying a foundation for the wide application of low-e glass with LOW radiation.



晶铭机械

JING MING JI XIE





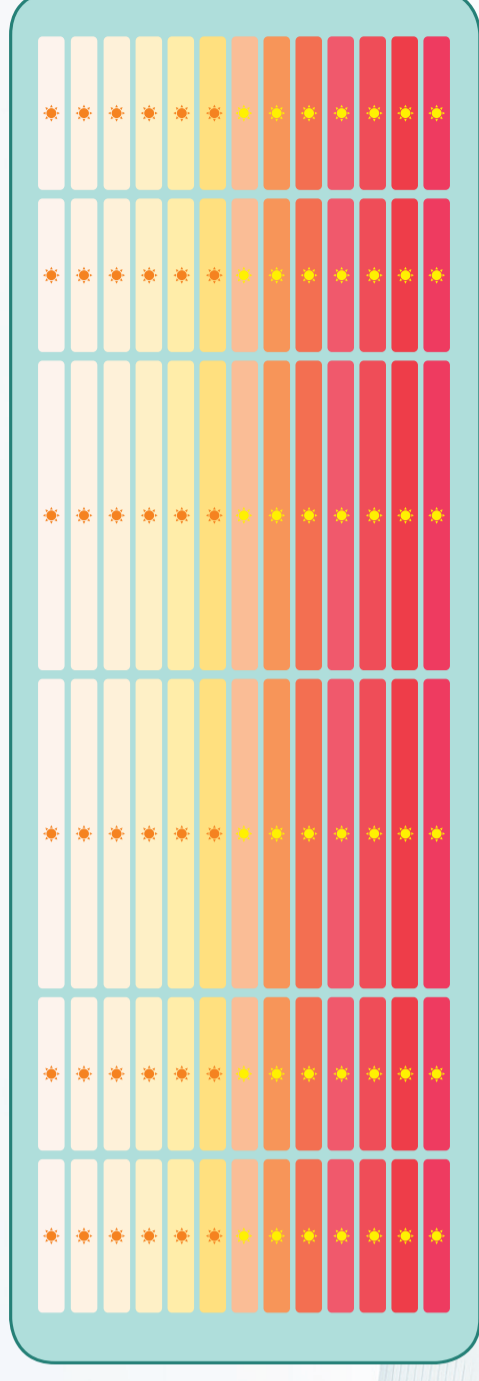
采用矩阵式和网阵式相结合

加热炉内强制对流加热系统采用了特质耐高温不锈钢材料（310S），使其在长期高温中不变质、不变形，加热丝放置对流风箱内，使对流风机吹炉丝的热温到玻璃表面，炉丝采用 2080 镍钛合金。

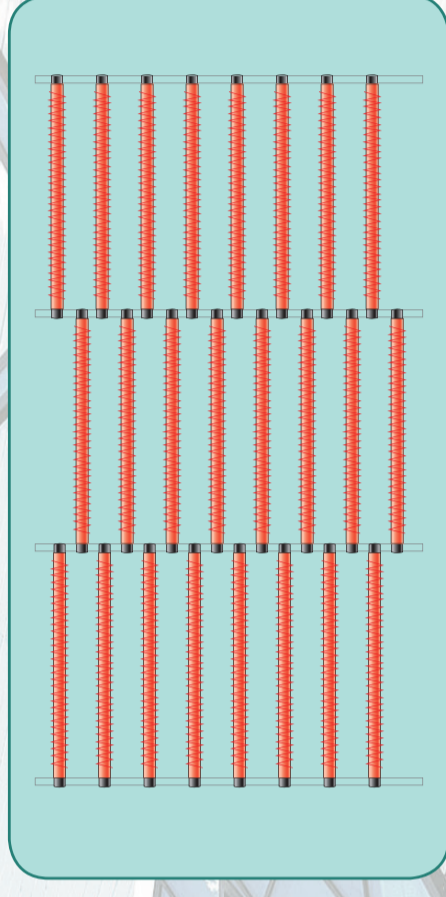
Use matrix and network matrix combination

The special high temperature resistant stainless steel (310S) is used in the forced convection heating system in the heating furnace so that it will not deteriorate or deform in the long-term high temperature, the convection fan blows the hot temperature of the furnace wire to the glass surface. The furnace wire is made of 2080 nickel titanium alloy.

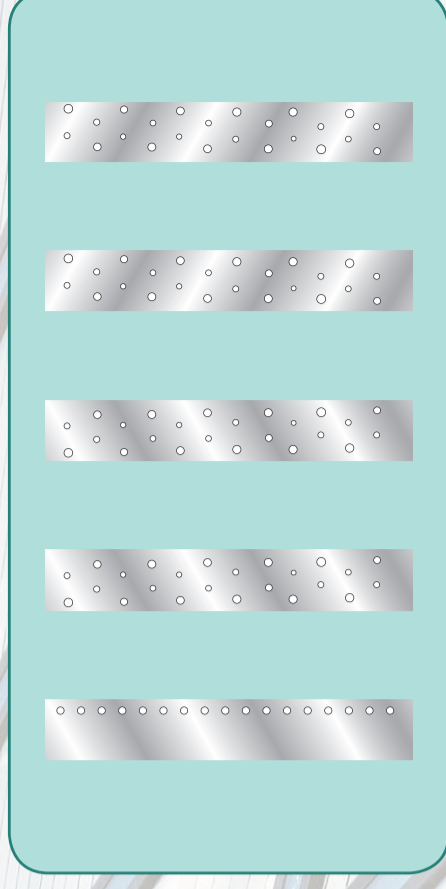
超精细的温控分区技术 Ultra-fine temperature control zoning technology



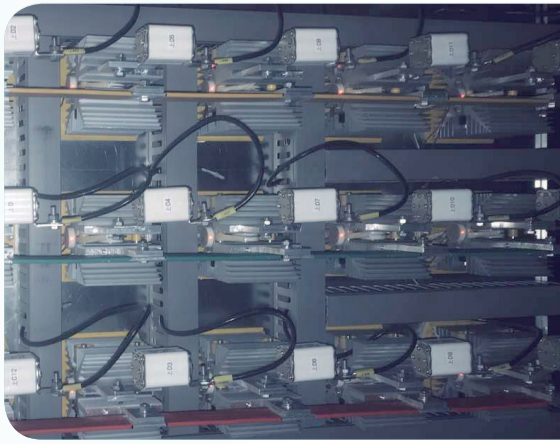
交替的炉丝排布技术 Alternate wire arrangement technique



多种风孔排布技术 A variety of wind hole arrangement technology



节能 30% 我们做到了



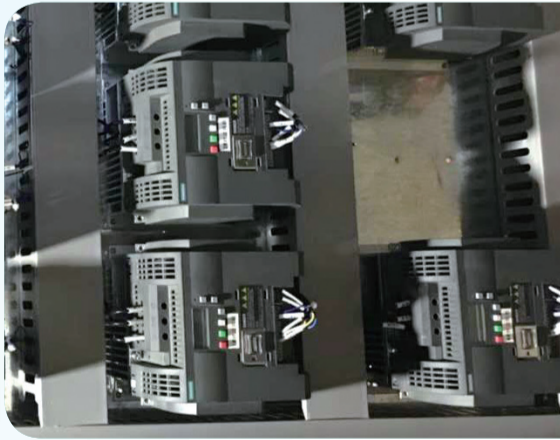
加热炉内强制对流加热系统采用了特质耐高温不锈钢材料（310S），使其在长期高温中不变质、不变形。

Heat resistant stainless steel material(310S) is adopted in heating chamber to ensure derable performance without distortion.



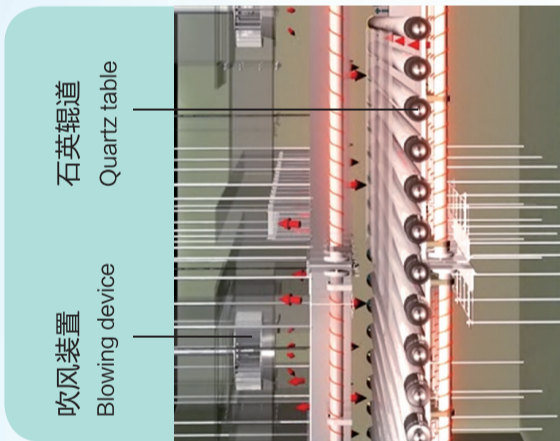
可控硅：真正实现调功，减少变压器容量，炉丝功率可控

SCR: Truly realize power regulation, reduce the transformer capacity, stable nickle chrome wire power is controllable.

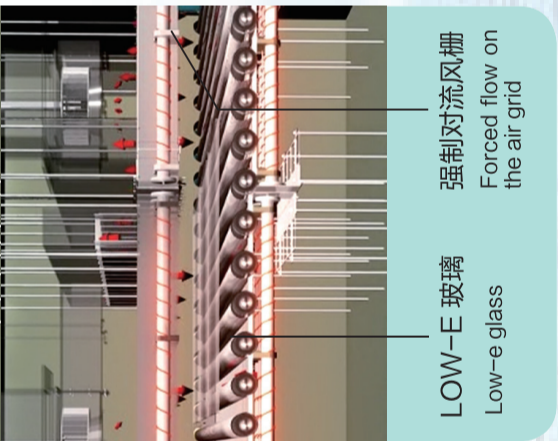


采用德国西门子变频器，性能稳定、可靠。

Germany Siemens frequency converter, stable and reliable performance.



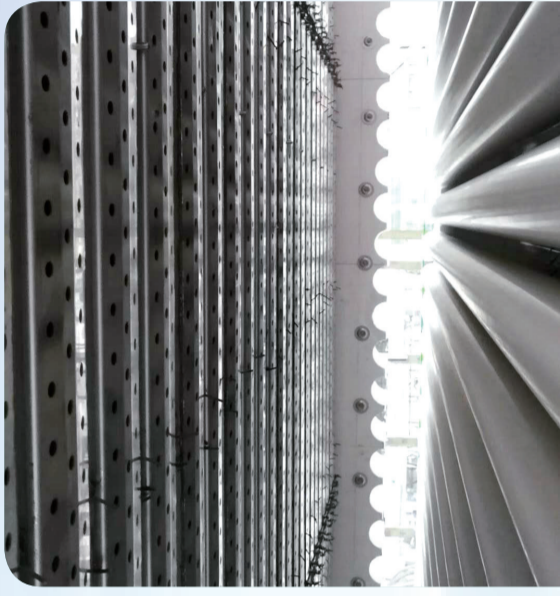
石英辊道
Quartz table



LOW-E 玻璃
Low-e glass

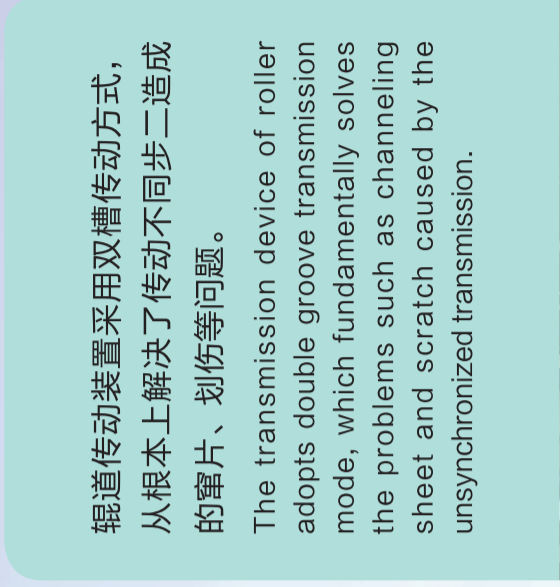
强制对流风栅
Forced flow on the air grid

效率提升 30% 我们做到了



炉体内采用矩阵式和网正式相结合，加热采用可控硅控制，更稳定更高效。加热炉丝（上下炉体）均采用镍铬丝，加热更快寿命更长，（薄板）风栅采用通过式结构，吹风大小风机分开吹风，均采用变频控制，从根本上解决高耗问题。

The furnace body adopts matrix and net formal combination, heating adopts silicon controlled, more stable and efficient. Heating furnace wire (upper and lower furnace body) all adopt nickel iron wire, heating faster and longer life, (thin plate) wind grid adopt through structure, blow separately, all adopt frequency conversion control, fundamentally solve the problem of high consumption.



辊道传动装置采用双槽传动方式，从根本上解决了传动不同步二造成的窜片、划伤等问题。

The transmission device of roller adopts double groove transmission mode, which fundamentally solves the problems such as channeling sheet and scratch caused by the unsynchronized transmission.

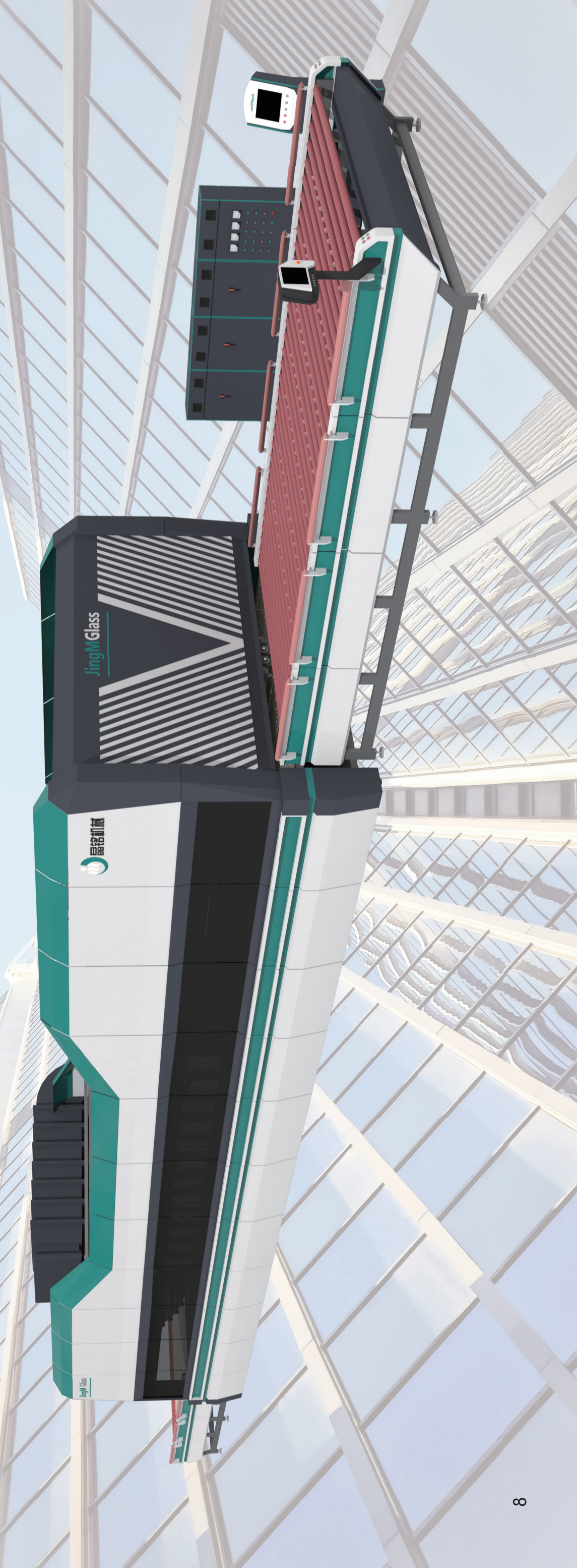


丝杠升降：风栅整体升降更平稳，避免因风压大风栅变形情况。

Lead screw rise and fall: the overall rise and fall of the wind grid is more stable, to avoid deformation of the grid due to wind pressure and wind.

JM-SQ 系列建筑玻璃双曲面钢化机组

MOULD BENDING GLASS TEMPERING FURNACE FOR BUILDING



主要用途：

JM-SQ 系列双曲面钢化机组是晶铭机械生产的目前最先进的辊道式双曲面钢化机组，主要用于生产建筑球体以及展馆的双曲面玻璃。

主要技术特点：

- 高温下模具成型，成型标准，玻璃球面圆滑、完美。
- 可生产各种小曲率半径、大球面双风挡及多曲率不规则的异形球面钢化玻璃。
- 模具制造简单，费用低廉，更换快捷、方便。
- 独特的螺旋矩阵式加热方式与智能炉温控制系统，确保玻璃加热的均衡性和温度的快捷性、准确性。
- 进口保温材料，独特的保温层铺设工艺，合理的生产工艺技术，确保能量的最低消耗。
- 强大的控制系统确保高度自动化生产，人机界面友好，操作简单、易学。

Main purpose:

BH-SQ series hyperboloid toughening unit is the most advanced baton hyperboloid toughening unit produced by BeiHeng Company.It is mainly used to produce building spheres and exhibition hall hyperboloid glass.

Main technical features:

- Glass forming under the high temperature condition ensures smooth and perfect spherical glass surface.
- Various window shield with small/big radius,or irregular curved glass can be processed.
- Easier mould-making and lower cost,faster and convenient mould-changing.
- Special spire screwy matrix heating method and professional oven-temperature intelligent control ensure the equilibrium and high speed for glass heating.
- Top quality insulating material,special heat-preservation layer arrangement process and reasonable process technology guarantee the lowest energy consumption.
- Powerful control software ensures high automation,comfortable man-machine interface and easy operation.

产品优势:

- 通过段全栅防火系列。
- 5mm 玻璃表面应力可达 180MPa。
- 玻璃表面应力差 $\leq \pm 5\text{MPa}$ 。
- 可加工 6mm 硼硅 4.0 玻璃。
- 高效离心风机, 主动振动检测, 节能且安全。
- 智能化远程监控系统。
- 设备自诊断, 具有完善的故障显示及排除功能。

型号	最大摆片面积 (mm)	厚度 (mm)			供电容量 (KVA)	高应力能 耗 (5mm)
Model	Max Load Area(mm)	普通玻璃	高应力、硼 硅 4.0	Glass Thickness(mm)	Minimum Peak Demand (KVA)	High stress energy consumption (5mm)
		Clear glass	Hi-stress and borosilicate 4.0 glass	高应力 普通玻璃 硼硅 4.0		
JM-PG-FH 5024	5000*2440	2440*5000	3.5-19	≥ 5	1000	5 kwh/m ²
JM-PG-FH 5028	5000*2800	2800*5000	3.5-19	≥ 5	1000	
JM-PG-FH 6024	6000*2400	2400*6000	3.5-19	≥ 5	1000	
JM-PG-FH 6028	6000*2800	2800*6000	3.5-19	≥ 5	1250	
JM-PG-FH 6030	6000*3000	3000*6000	3.5-19	≥ 5	1600	

Product advantages:

- Through-section full-gate fire protection series
- 5 mm glass surface stress can reach 180 mpa.
- The stress difference of glass surface is $\leq \pm 5$ mpa.
- CAN process 6mm borosilicate 4.0 glass.
- High efficiency centrifugal fan, active vibration detection, energy saving and safety.
- Intelligent remote monitoring system.
- Equipment self-diagnosis, with perfect fault display and troubleshooting functions.



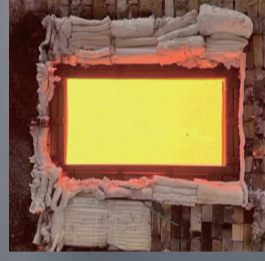
秦皇岛市晶铭玻璃机械制造有限公司

宣传展示

Excavator engine
ORIGINAL ACCESSORIES
原厂配件 质量保证

JingM Glass

JingM Glass





晶铭机械
JING MING JI XIE

JM-PW 系列平弯钢化机组

COMBINATOPN OF FLAT/BENDING GLASS
TEMPERING FURNACE



主要用途：

BH—PW 平弯钢化系列主要用于加工家电、汽车侧窗、船舶、建筑装饰、家具、沐浴房等平弯钢化玻璃。

主要技术特点：

- 节能高效，操作简单和维修便利。
- 电脑自动调弧，无需模具，全过程实现生产自动化。
- 变弧机构采用伺服系统控制。
- 加热元件寿命长，安装和拆封简单。
- 改变传统的生产工艺，实现了多种工艺技术的完美组合，全方位满足用户的要求。
- 全自动成型技术，无需模具，成型标准，可生产多曲率钢化玻璃。
- 独特的螺旋矩阵式加热方式与智能炉温控制系统，确保玻璃加热的均衡性和温度的快速性、准确性。
- 强大的控制系统确保高度自动化生产，人机界面友好，操作简单、易学。
- 所加工产品均符合 GB9963/GB9656/ECER — 43/ANSIZ97.1。

Main purpose:

BH-PB series double-direction flat/bent glass tempering furnace is mainly used to produce top-grade flat tempered glass for furniture, household, appliance, sjip, automobile side-lite, architecture AND SHOWER-BOOTH ETC.

Main technical features:

- Energy saving safe operation and ease of maintenance.
- The forming is automatically completed by computer.
- The forming system is controlled by servo-system.
- The heating elements made by good quality material are designed, for long life, the heating elements are easy to remove.
- Improved process technology can fully customer's requirements.
- Special spice screwy matrix heating method and professional oven-temperature intelligent control ensure the equilibrium and high speed for glass heating.
- Powerful control software ensures high automation, comfortable man-machine interface and easy operation.
- Processed products accord with technical standard of GB9656/GB9663/ECER-43, ANSIZ97.1.

该产品是根据对流加热原理，采用了特殊设计的耐高温对流风机的热风循环结构，同时应用了多项先进技术，使玻璃加热速度更快，生产效率和产品质量大幅度提高，特别是在加工 LOW-E 玻璃方面有着绝对的优势。

主要用途：

专为高品质 LOW-E 玻璃钢化设计，可用于家电玻璃、室内装饰、车辆、船舶、幕墙等高品质玻璃。

主要技术特点：

特殊设计的耐高温对流风机，高温性能更加稳定可靠，对流效果极佳。先进的对流循环结构，使玻璃的加热速度更快，受热更均匀，加工能力更强，效率更高，节能效果更好。
对流风机由变频器控制运转速度，计算机给定，使玻璃上下表面加热一致，大大提高了产品质量，使温度控制极其准确，保证炉内温度加热均匀。
炉膛内衬采用特殊材料，有效控制了各种颗粒物的产生及因此对玻璃质量造成的影响。皮带传动，使辊道的同步性大为提高，与国际著名公司生产的陶瓷辊道配合使用，使产品质量更优。

According to the convection heating theory, we adopt special designed convection fan and thermal circulation structure, besides, we apply some other advanced technology, all of which roll into one that speeds the glass heating and improves efficiency and produces quality, the advantage is more distinct when processing LOW-E Glass.

Main purpose:

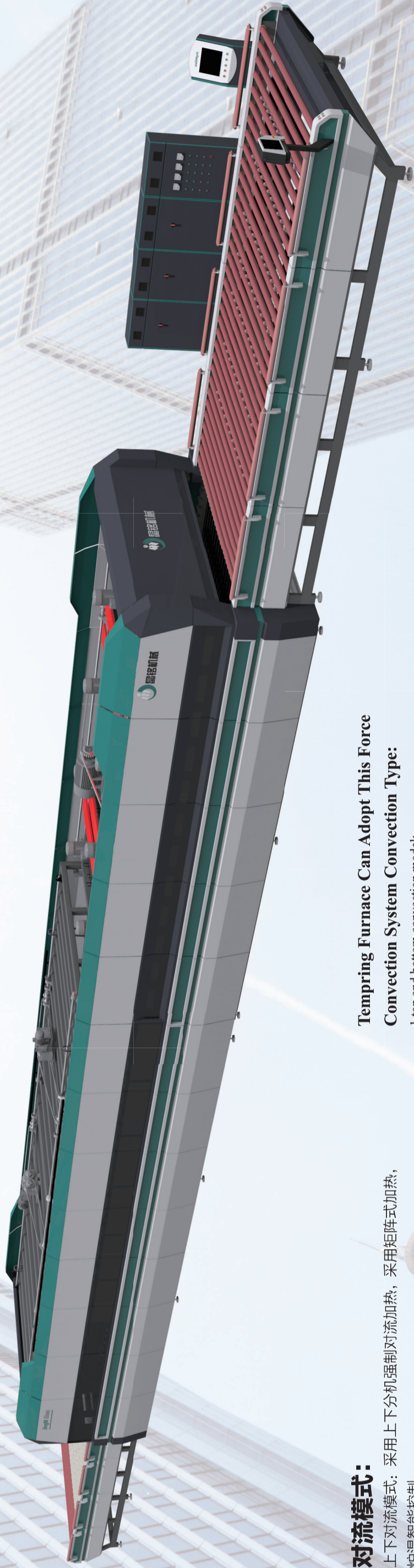
The machine is developed specially for heating up low-E glass or grass or grade domestic appliance interior decoration vehicles, boats, curtain wall glass, etc.

Main technical features:

Special design of the reasonable fan makes the high temperature capability more reliable and ensures excellent effect.
The special and reasonable arrangement of the heating elements, together with the advanced temperature control module, and PID power adjustment, make the temperature controlling extremely precise, adjustment easier and the oven-temperature more homogeneous.
Inside the oven, we adopt high quality material to avoid any bits which may affect the glass quality.
Double belts for transmission and famous brand ceramic rollers make the running more synchronous and quality higher.
The thermal circulation from the convection fan inside the oven, so the thermal losses can be avoided greatly.

JMQ 系列强制对流钢化机组

FORCE CONVECTION GLASS TEMPERING FURNACE



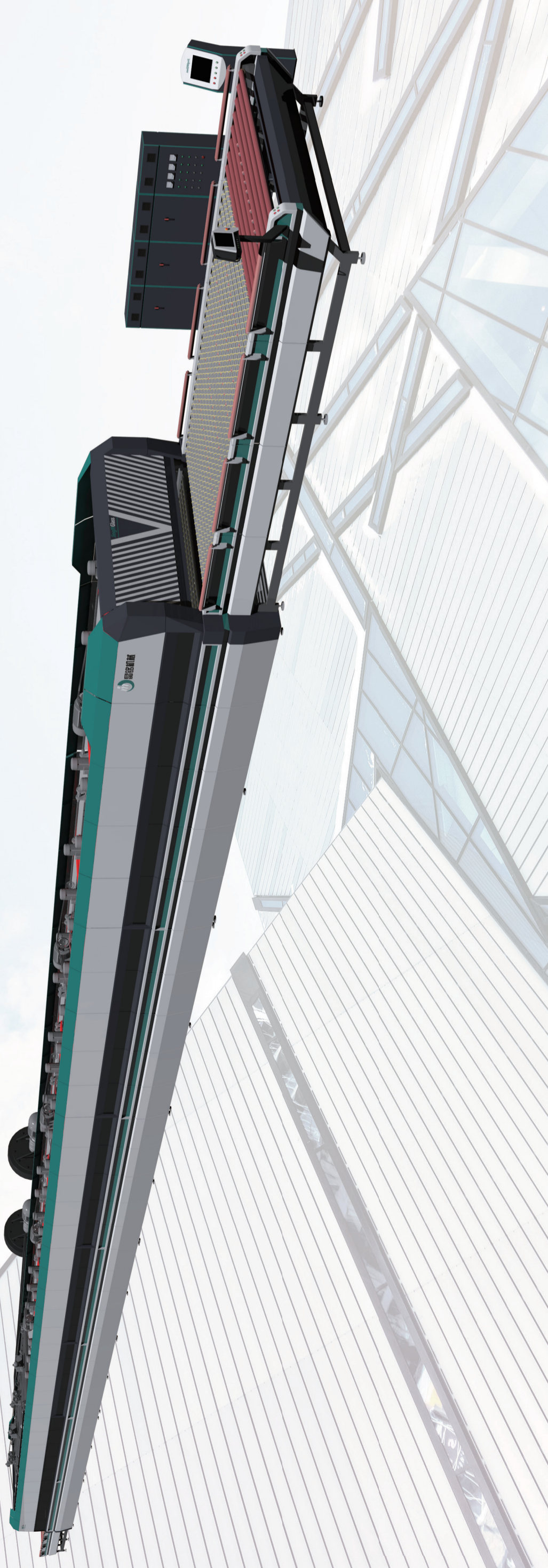
对流模式：

上下对流模式：采用上下分机强制对流加热，采用矩阵式加热，炉温智能控制。
上部对流模式：采用上部风机强制对流热风循环，采用矩阵式加热，炉温智能控制。
双室强制对流模式：采用双室加热的工作方式，预热炉采用上部强制对流，高温采用辐射加热。

Tempring Furnace Can Adopt This Force

Convection System Convection Type:

- 1.top and bottom convection model: there are convection systems for top heating and bottom heating with high temperature blower
- 2.top convection model: there is only convection system for top heating with temperature blower
- 3.double chamber convection type: the are two heating chamber adopts top heating convection the second one adopts radiation heating with air-balance.system this type for fist-quality with high cost



完美的产品质量：钢化玻璃平整度极佳，光学性能近似玻璃原片。
超强的生产能力：数倍于摆动式钢化炉的产量。
独特的加热方式：炉温平滑递增，玻璃均衡加热，无炸炉现象。

主要用途：

BH-PL 系列连续平玻璃钢化炉主要用于钢化大批量、相似规格的太阳能、建筑、家电用玻璃，生产效率高，能耗低，产品光学性能更好的特点。

主要技术特点：

一采用国际领先的传动、加热和控制技术，连续不断上（下）片的生产方式进行玻璃的钢化加工。

按预定速度和设定的温度加热，后单向运动中被钢化、冷却。

钢化升温过程更易控制，大大减少玻璃的擦伤率。

Perfect products quality:

Perfect glass flatness with best optical performance.

nigh efficiency:

ProductMity is several times compared with the oscillating tempering furnace.

Special heating methods:

Temperature increases gradually and smoothly, ensuring the glass to be heated evenly inside the furnace and avoid glass broken inside the furnace.

Main purpose:

BH-PL series flat tempered glass tempering furnace is mainly used for large quantities, specifications similar to solar energy, construction, household appliances glass, high production efficiency, low energy consumption, the characteristics of better optical properties of products.

Main technical features:

Adopt international and international advanced transmission, heating and control technology, continuous up and down(down) the production method of the glass of the tempering process.

At a predetermined speed and set the temperature of heating, after the one-way movement was tempered, cooling.

Tempering heating process easier to control, greatly reducing the rate of glass.

型号 Model	最大平玻璃尺寸 Man.flat glass size (mm)	最小平玻璃尺寸 Min.flat glass size (mm)	玻璃厚度 Thickness (mm)	产量 Yield (5mm) (炉/时)	功率 power (kva)
JMSS-2003-2	2000×300	50×50	2.85-6	13	125
JMSS-2506-2	2500×600	100×50	2.85-12	28	250
JMSS-3209-2	3200×900	150×80	2.85-12	43	500
JMSS-4012-2	4000×1250	250×100	2.85-15	112	700
JMSS-5015-2	5000×1500	300×100	2.85-19	170	1000
JMSS-5024-2	5000×2400	300×300	4-19	275	1100
JMSS-6030-2	6000×3000	400×300	4-19	388	1600

适产玻璃种类:

LOW-E 玻璃、超白玻璃、丝网印刷玻璃、压花玻璃、着色玻璃等。

Suitable for:

low-E glass, ordinary flat glass, screen printing glass, embossed glass, colored glass, etc.

主要用途:

高端建筑用幕墙玻璃，在线离线 LOW-E 及镀膜玻璃。

Mainly in:

Curtain wall glass for high-end building, online offline LOW-E and coated glass.

其他型号受篇幅所限并未罗列

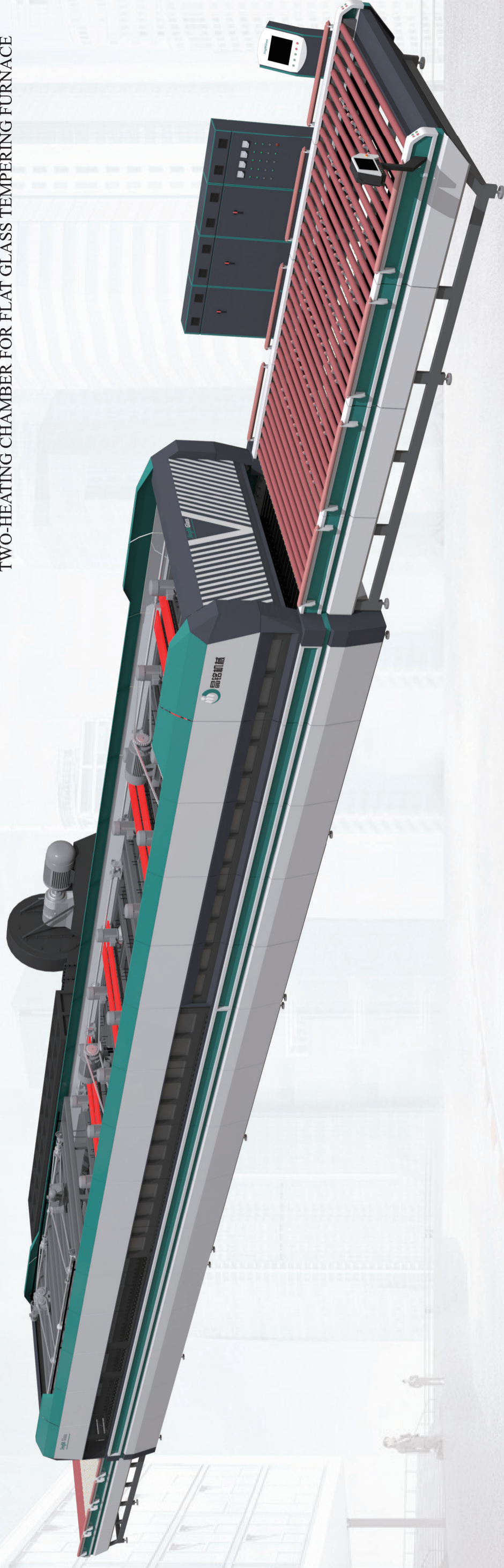
Other models are not listed for the limited space

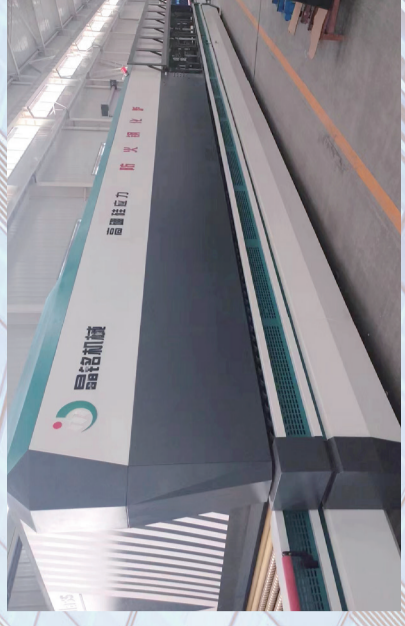
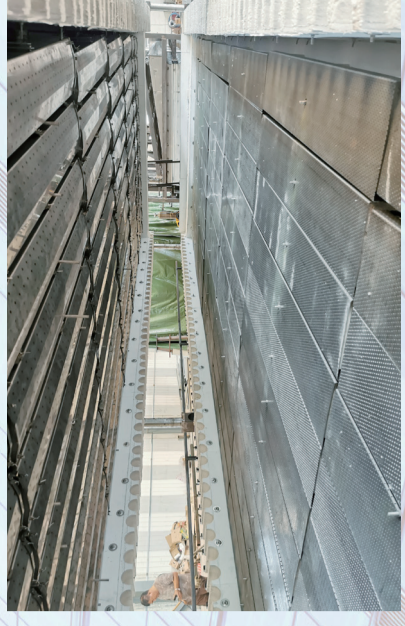
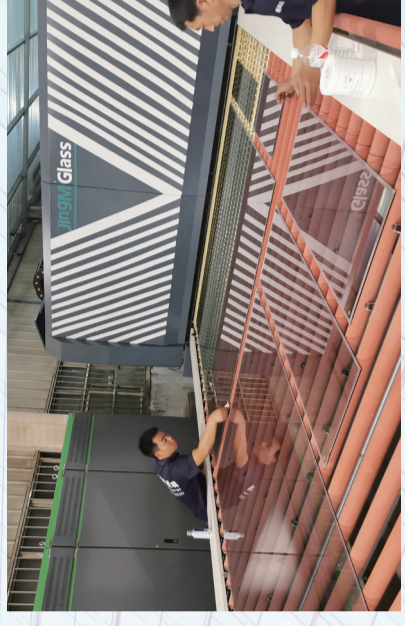
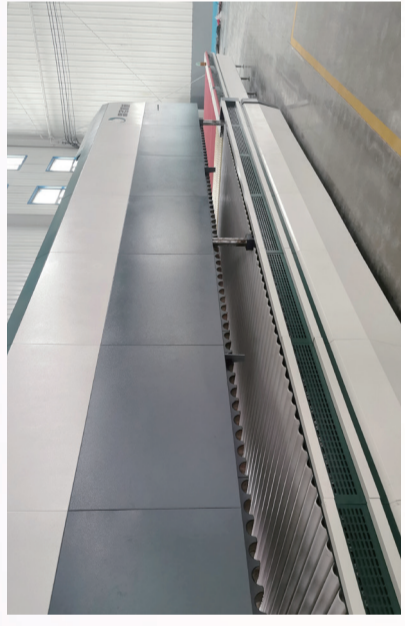
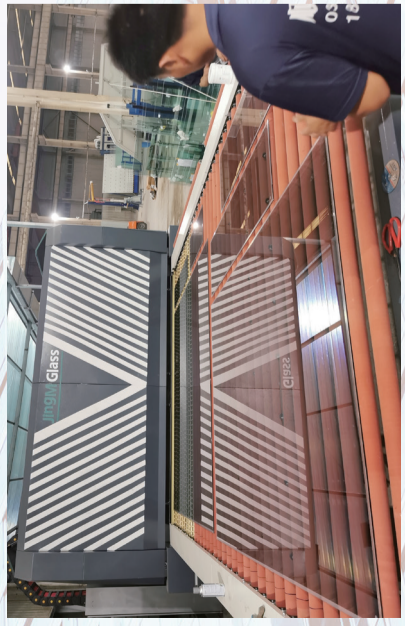
Autres modelres ne sont pas listes pour la limite d'espace



JMSS 系列双室钢化玻璃机组

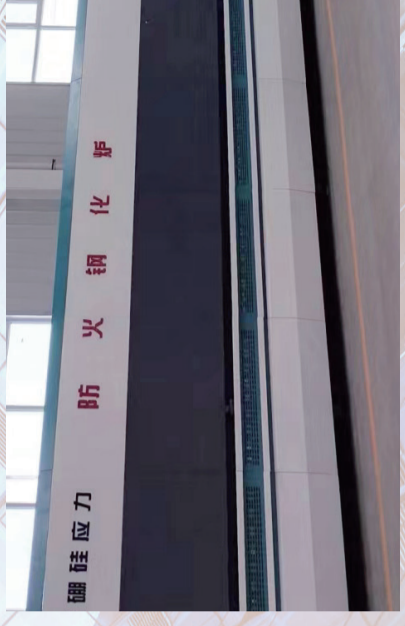
TWO-HEATING CHAMBER FOR FLAT GLASS TEMPERING FURNACE





赢天下
所以专业

精品质
因为专注



基础应力 防火钢化炉

高硅应力 防火钢化炉